

TIFFIN

2024

CLASS-A

# OPEN ROAD ALLEGRO





## Premium Paint System



Our eight-step, full-body paint system features premium grade paints sealed with three layers of clear coat with ultraviolet protection. An additional layer of high-performance film protects the front of the coach and select areas.

## Generation 9 Paint Schemes



G9 BARCELONA



G9 SUNLIT SAND



G9 NASA



G9 WHITE MAHOGANY



G9 FROSTED GRANITE

## Generation 10 Paint Schemes



G10 BARCELONA



G10 SUNLIT SAND



G10 NASA



G10 WHITE MAHOGANY



G10 FROSTED GRANITE

Images shown are representations of paint layouts only and do not reflect all exterior features or options. Colors shown may slightly differ from colors on actual product.

## Floor Plans



The design of every Open Road floor plan must meet four essential criteria: Maximum space, Optimal organization, Relaxation plus, and Elegant atmosphere. Tiffin's MORE Plans offer your family the most comfortable layout for life on the road.

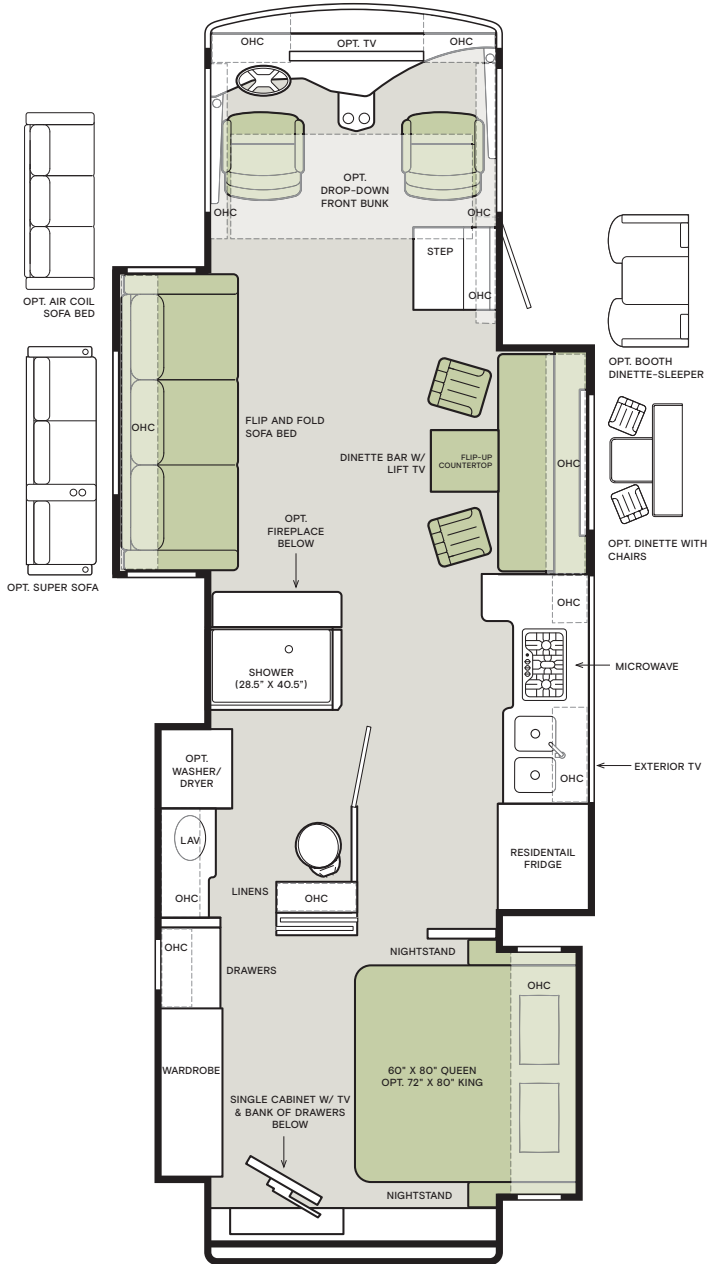


If optional furniture combinations are selected, window locations may vary from diagram shown.

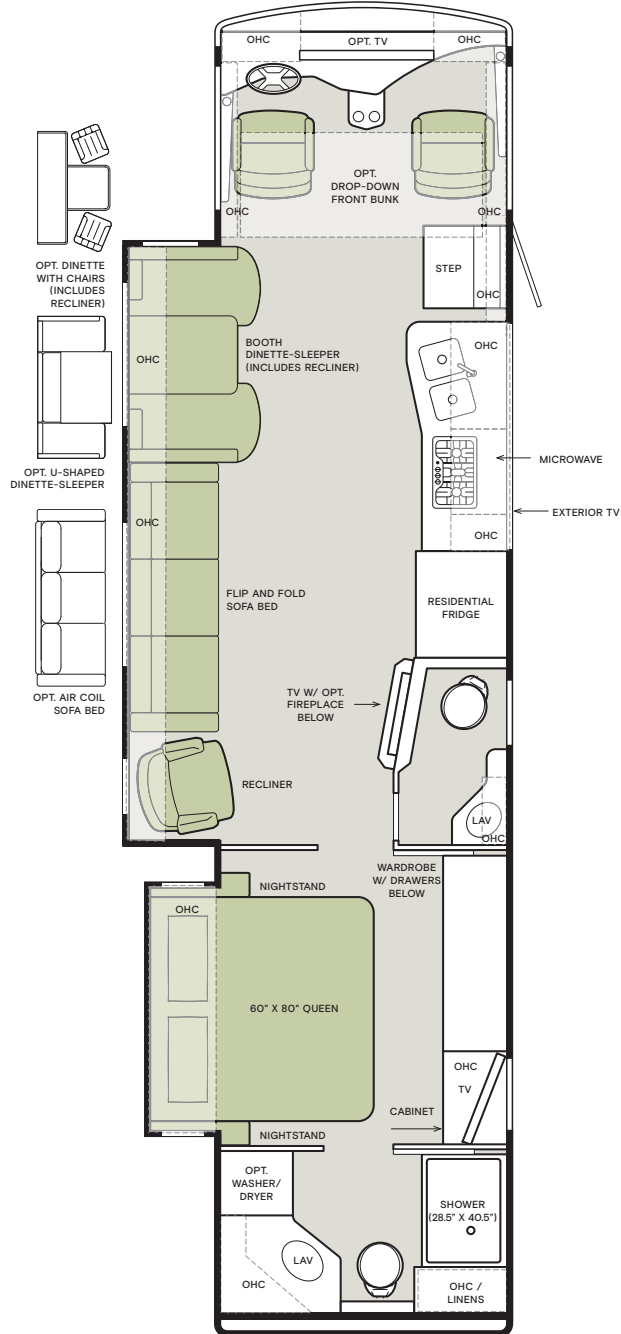
All options may not be available in every model. Because of progressive improvements and specifications, standard and optional equipment are subject to change without notice or obligation.

For a complete and up-to-date list of available options and specifications, visit [tiffinmotorhomes.com](http://tiffinmotorhomes.com).

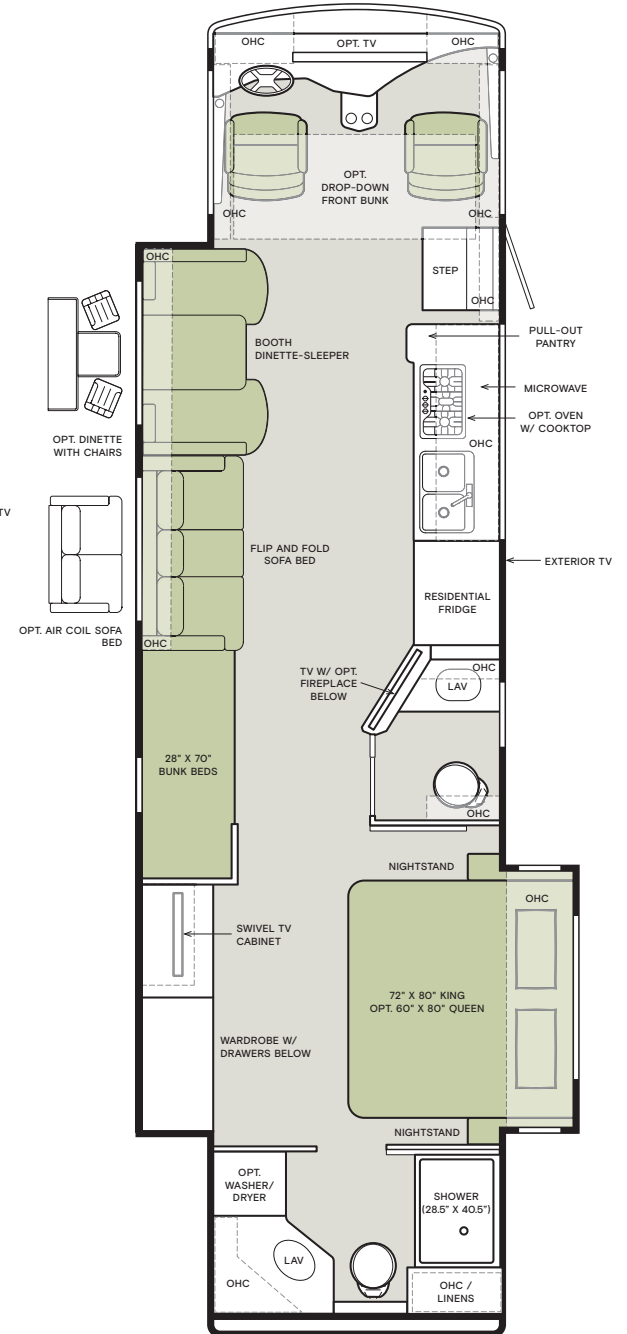
34 PA



36 LA



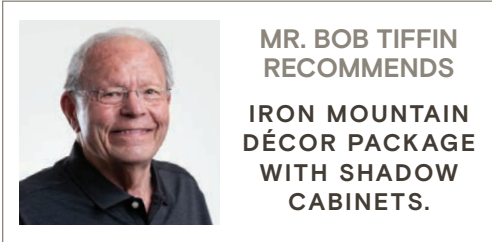
36 UA





## Interior Décor

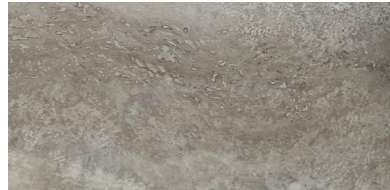
Make your experience on the road all your own. Express yourself by choosing from interior selections such as cabinet finishes and décor options for every part of your motorhome. In the 2024 Open Road, you'll be able to travel in style no matter where your adventure takes you.



## FLOORING



SEAGRASS Luxury Vinyl Tile

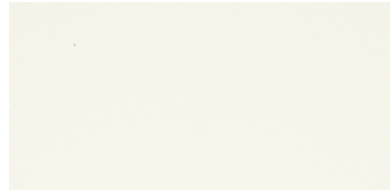


MONTEANO Luxury Vinyl Tile **NEW**

## CABINETS



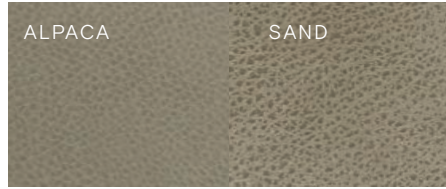
SHADOW



WHITE LINEN **NEW**

Images shown are representations of paint layouts only and do not reflect all exterior features or options. Colors shown may slightly differ from colors on actual product. Colors of interior decor options shown may vary from colors on actual product.

## MOONDANCE



FURNITURE



WINDOW TREATMENT



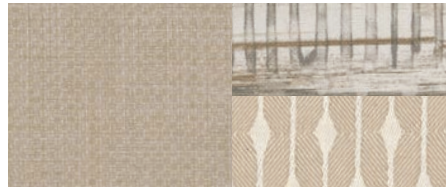
BACKSPLASH



COUNTERTOP



LIVING ROOM



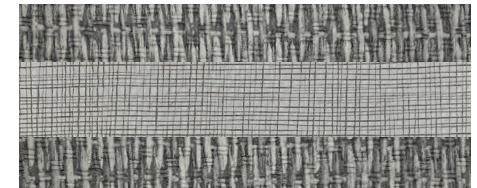
MASTER SUITE

## IRON MOUNTAIN

**NEW**



FURNITURE



WINDOW TREATMENT



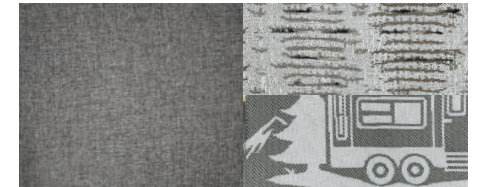
BACKSPLASH



COUNTERTOP



LIVING ROOM



MASTER SUITE

# Specifications, Features, and Options

KEY : S : Standard Feature | O : Optional Feature; Additional costs may apply | D : Dependent; Availability is dependent on selection of another option | — : Not Available

WEIGHTS AND MEASURES	32 FA	32 SA	34 PA	36 LA	36 UA
<b>DIMENSIONS</b>					
Overall Length (approximately) <sup>1</sup>	34' 3"	34' 3"	36' 1"	37' 6"	38'
Wheel Base	228"	228"	252"	252"	252"
Overall Width <sup>1</sup>	101"	101"	101"	101"	101"
Overall Height	12' 10"	12' 10"	12' 10"	12' 10"	12' 10"
Minimum Garage Height	14'	14'	14'	14'	14'
Interior Height	84"	84"	84"	84"	84"
Interior Width	96"	96"	96"	96"	96"
Square Footage (approx.) <sup>2</sup>	315	300	355	330	355
Basement Storage (cubic feet, approx.)	140	140	203	203	203
<b>WEIGHT LIMITS</b>					
GAWR-Front (pounds)	9,000	9,000	9,000	9,000	9,000
GAWR-Rear (pounds)	15,500	15,500	17,500	17,500	17,500
GVWR (pounds)	24,000	24,000	26,000	26,000	26,000
Maximum Trailer Weight (pounds) <sup>3</sup>	5,000	5,000	4,000	5,000	4,000
Hitch Rating (pounds)	5,000	5,000	5,000	5,000	5,000
GCWR (pounds)	30,000	30,000	30,000	30,000	30,000
<b>CAPACITIES</b>					
Fuel Tank (gallons)	80	80	80	80	80
Fresh Water (gallons)	70	70	70	70	70
Grey Water (gallons)	66	66	66	66	66
Black Water (gallons)	50	50	50	50	50
LPG Tank (gallons) <sup>4</sup>	24	24	24	24	24
<b>QUANTITIES</b>					
Number of Slideouts	2	2	4	2	2
Sleeping Capacity <sup>5</sup>	5 to 7	4 to 6	3 to 6	4 to 6	5 to 7
Sleeping Areas <sup>5</sup>	4 to 6	2 to 4	2 to 4	2 to 4	4 to 6
Seat Belts <sup>5</sup>	4 to 6	5 to 7	5 to 7	5 to 7	4 to 6
Seating Capacity <sup>5</sup>	6 to 8	7 to 9	7 to 9	8 to 10	6 to 8

<sup>1</sup> The approximated coach width and length does not include side-view mirrors and rear ladders.

<sup>2</sup> Square footage was calculated with the slide-outs fully extended.

<sup>3</sup> Maximum Trailer Weight is dependent on the loading and towing variables which include the GVWR, GAWR, and GCWR, as well as adequate trailer brakes.

<sup>4</sup> LPG tank can only be filled to 80% capacity.

<sup>5</sup> Dependent on furniture and dinette options.

## CHASSIS AND DRIVETRAIN

<ul style="list-style-type: none"> <li>Ford® F-53 Super Duty® Class A Motorhome Chassis</li> <li>Ford® V8 7.3L 350 HP Gas Engine with 468 lb-ft Torque</li> <li>Two-wheel Drive</li> <li>210-Amp Alternator</li> <li>TorqShift® 6-speed Automatic Overdrive with Tow/Haul Mode</li> </ul>	<ul style="list-style-type: none"> <li>Aluminum Wheels</li> <li>Front and Rear 255/80R 22.5 Tires</li> <li>(1) 12-Volt Flooded Lead-Acid Chassis Batteries</li> <li>Hydraulic Leveling Jacks with Control Panel</li> <li>Rear Sway Bar</li> </ul>	<ul style="list-style-type: none"> <li>Custom Tuned Sachs® Shock Absorbers</li> <li>Front Radiator</li> <li>Front and Rear Disc Brakes</li> <li>Manual Parking Brake</li> <li>Rear Fuel Fill</li> <li>Automatic Traction Control</li> <li>Cruise Control</li> </ul>
---	---	---

CHASSIS SPECIFICATIONS	32 FA	32 SA	34 PA	36 LA	36 UA	
Suspension	Front and Rear Tapered Multi-leaf Suspension	S	S	S	S	S
	Front Tapered Multi-leaf Suspension with LiquidSprings® Rear Suspension	—	—	O	O	O

<sup>1</sup> Peak horsepower achieved at 3,900 RPM. Peak torque achieved at 3,900 RPM.

## CONSTRUCTION

<ul style="list-style-type: none"> <li>Seamless One-piece Gel-coat Fiberglass Molded Roof Cap</li> <li>5 1/4" Formed Roof Insulation</li> <li>Tubular Aluminum Roof Skeleton Frames</li> <li>Extraordinaire™ Ducted Air Cooling System</li> </ul>	<ul style="list-style-type: none"> <li>One-piece Molded Gel-coat Fiberglass Front and Rear Caps</li> <li>Crane® Composites Noble® Select All-Composite Exterior Sidewalls</li> <li>Tubular Aluminum Wall Skeleton Frames</li> <li>High-performance Thermal Insulation in Sidewalls</li> </ul>	<ul style="list-style-type: none"> <li>Steel Floor Skeleton</li> <li>Engineered Wood Sub-flooring</li> <li>1 1/2" Thick Thermal Insulation in Floor</li> <li>Steel Basement Construction</li> <li>Rust Protective Undercoating</li> <li>Hydraulic Slide-out Mechanisms</li> </ul>
---	---	---

## ELECTRICAL

<ul style="list-style-type: none"> <li>Liquid Propane (LP) Coach <sup>1</sup></li> <li>Spyder Controls Multiplex System</li> <li>Firefly Integrations Mira Module <sup>2</sup></li> <li>Centralized 7.5" Spyder System Main Monitor</li> <li>Interior Entryway Spyder System Color Touchscreen</li> <li>Conveniently Located Spyder Switch Panels Throughout Coach</li> <li>2,000-Watt Pure Sine Wave Inverter Charger with Auto-Gen Start and Interior Remote Control <sup>3</sup></li> </ul>	<ul style="list-style-type: none"> <li>(4) 6-Volt, 230-Amp Hours Flooded Lead-Acid House Batteries</li> <li>50-Amp Shore Power</li> <li>Auxiliary Solar Port</li> <li>HD Over-the-air Antenna</li> <li>Park Cable and Ground Satellite Hook-up</li> <li>Prep for In-motion Satellite</li> <li>Blu-ray™ Player</li> <li>Satellite Receiver <sup>4</sup></li> <li>Prep for Wi-Fi Booster</li> </ul>	<ul style="list-style-type: none"> <li>12-Volt Breaker Panel</li> <li>12-Volt Disconnect Switch</li> <li>Rotary Disconnect Switches for House Batteries, Chassis Batteries, and Inverter</li> <li>Ground Fault Circuit Interrupter (GFCI) Outlets at Galley, Lavatories, and Sewer Bay</li> <li>110-Volt Exterior Receptacle</li> <li>Surge Guard® Transfer Switch</li> <li>USB Receptacles Throughout Coach</li> </ul>
--	---	---

## ELECTRICAL OPTIONS

	32 FA	32 SA	34 PA	36 LA	36 UA	
Generators and Power Systems	5.5-Kilowatt Onan® Quiet Gas Generator	S	S	S	—	—
	7.0-Kilowatt Onan® Quiet Gas Generator	O	O	O	S	S
Battery Slide Out Tray <sup>5</sup>	S	S	S	—	S	
Air Conditioning	(2) 13,500-BTU Air Conditioners	S	S	S	S	S
	(1) 13,500-BTU Air Conditioner and (1) 15,000-BTU Air Conditioner with Heat Pump <sup>6</sup>	D (O)	D (O)	D (O)	O	O
Space Heating	(1) 35,000-BTU and (1) 30,000-BTU Ducted Furnaces	S	—	—	—	—
	(1) 35,000-BTU Ducted Furnace	—	S	—	—	—
	(1) 35,000-BTU and (1) 20,000-BTU Ducted Furnaces	—	—	S	—	—
	(1) 30,000-BTU and (1) 20,000-BTU Ducted Furnaces	—	—	—	S	S
Solar Panels	Prep for Solar Panels <sup>9</sup>	O	O	O	O	O
	(1) 200-Watt Solar Panel with (1) 30-Amp Controller	O	O	O	O	O
	(2) 200-Watt Solar Panels with (1) 30-Amp Controller	O	O	O	O	O
In-motion Satellite Dish <sup>7</sup>	O	O	O	O	O	
Prewiring for Winegard® Trav'ler™ Satellite <sup>8</sup>	O	O	O	O	O	
Wi-Fi Booster	O	O	O	O	O	

<sup>1</sup> Propane is used to power the ducted furnaces, the water heater, and liquid propane cooktops.

<sup>2</sup> Download the accompanying Vegatouch app to control your coach locally within Bluetooth range.

<sup>3</sup> Automatic generator start capabilities controlled through Spyder Controls Multiplex System.

<sup>4</sup> Requires subscription.

<sup>5</sup> Due to 36 LA's batteries being located under the entry steps, they do not get a slide tray.

<sup>6</sup> Option only available with 7.0-Kilowatt Onan® Quiet Gas Generator. 15,000-BTU air conditioner replaces the front 13,500-BTU air conditioner. Only the 15,000-BTU air conditioner has a heat pump.

<sup>7</sup> In-motion Satellite Dish and Prewiring for Winegard® Trav'ler™ Satellite cannot be optioned together on 32 FA, 32 SA, or 34 PA. High-definition programming is not available on a domed satellite antenna unless you subscribe to DISH Network®.

<sup>8</sup> In-motion Satellite Dish and Prewiring for Winegard® Trav'ler™ Satellite cannot be optioned together on 32 FA, 32 SA, or 34 PA.

<sup>9</sup> Includes docking ports for aftermarket solar panels.

## Specifications, Features, and Options (Cont'd)

KEY : S : Standard Feature | O : Optional Feature; Additional costs may apply | D : Dependent; Availability is dependent on selection of another option | — : Not Available

### PLUMBING

- Truma AquaGo™ Comfort Instant Water Heater <sup>1</sup>
- Water Heater Bypass System
- Aqua View Showermiser™
- Water Filter
- Water Pump Switch Access from Spyder System and Sewer Bay Board
- Low-point Water Drain Lines
- Black Holding Tank Flush System
- Gravity Water Fill
- Heated Fresh and Holding Tank Compartment via Heat Duct
- Tank Level Monitor System
- Centralized Exterior Sewer Bay with Gravity Black and Grey Evacuation Ports
- Exterior Rinse Hose with Shower Head
- Sewer Bay Hand Sanitizer and Paper Towel Holders

<sup>1</sup> Controllable through the Truma control panel and the Spyder System control panels.

### EXTERIOR

- Full-body Paint with (3) Layers of Clear Coat
- Single-colored Slide-out Endwalls
- High Performance Protective Film on Front Cap and Select Areas
- (1) Girard® Side-mounted Powered Patio Awning with Integrated LED Lighting
- Girard® Slide-out Toppers
- Side-swinging Exterior Storage Doors with Gas Shocks
- Lockable Handles on Compartment Doors
- Motion-sensor Lights in Cargo Bay
- 120-Volt and 12-Volt Outlets Inside Cargo Bays
- GatorHyde-lined Cargo Walls and Floor
- Framed, Single-Pane Windows
- Exterior Patio Light
- Daytime Running Lights
- Chrome Power Heated Side-View Mirrors with Integrated Cameras
- Exterior TV with Soundbar
- Fast Charge USB ports within Exterior TV Compartment
- Lightweight Entry Door with Integrated Screen
- Entry Door Grab Handle
- Deadbolt Front Entrance Lock
- Automatic Double Entry Step
- Mud Flaps

EXTERIOR OPTIONS	32 FA	32 SA	34 PA	36 LA	36 UA
Lippert™ On-The-Go Ladder <sup>1</sup>	O	O	O	O	O

<sup>1</sup> All units will ship with a Lippert™ On-The-Go™ Prepped Receiver installed.

### INTERIOR

- Handcrafted Overhead Cabinetry
- Carpeted Step Well with Composite Steps
- Living Area TV <sup>1</sup> **UPDATED**
- Solid Surface Galley Countertop
- Treated Carpet in Slide-out Floors
- Handcrafted Slide-out Fascia
- Soft Touch Vinyl Ceiling
- Dimmable LED Lighting
- Carbon Monoxide Detector
- LPG Leak Detector
- Smoke Detector
- Fire Extinguisher
- Solar and Privacy Shades
- Soft-closing Drawers
- Powered Roof Vents
- Interior Grab Handle at Entry Door
- Egress Windows Throughout Coach

INTERIOR OPTIONS	32 FA	32 SA	34 PA	36 LA	36 UA
Interior Decor Packages	Moondance	O	O	O	O
	Iron Mountain <b>NEW</b>	O	O	O	O
Upholstery Fabrics	Snowhill Sand Furniture Coverings and Ultrafabrics® Montage Alpaca Driver and Passenger Seats <sup>2</sup>	D	D	D	D
	Snowhill Dove Furniture Coverings and Ultrafabrics® Montage Landscape Driver and Passenger Seats <sup>3</sup>	D	D	D	D
Cabinetry Stains	Shadow	O	O	O	O
	White Linen <b>NEW</b>	O	O	O	O
Floor Tiles	Sea Grass Luxury Vinyl Tile	O	O	O	O
	Monteano Luxury Vinyl Tile <b>NEW</b>	O	O	O	O
Storage Compartment Within Entry Steps <sup>4</sup>	S	S	S	-	S
Recessed Step Well Lighting	-	S	S	S	S
Standalone Living Area Fireplace	-	O	O	O	O
Washer & Dryer	Prep for Washer and Dryer	-	S	S	S
	Combo Washer-Dryer	-	O	-	-
	Stacked Washer and Dryer	-	-	O	O
Central Vacuum System	O	O	O	O	O

<sup>1</sup> Moved to new location above dinette on 32 FA. Removes section of overhead cabinetry on 32 FA.

<sup>2</sup> Always paired with Moondance Fabric Suite.

<sup>3</sup> Always paired with Iron Mountain Fabric Suite.

<sup>4</sup> 36 LA's batteries are located under entry steps.

### DRIVER'S COMPARTMENT

- Ultrafabrics® Montage Power Driver and Passenger Seats
- Dual Driver And Passenger Seat Armrests
- Swivel Bases for Driver and Passenger Seats
- Adjustable Seatbelt Brackets
- Tilt and Telescoping Steering Wheel with Integrated Controls
- Ergonomic Dash with Graphite Accents
- Mounted Dash Fans
- Cupholders on Driver and Passenger Side
- Backlit Instrument Cluster
- Center Storage Compartments
- Generator Start & Stop Rocker Switch
- USB Dash Receptacles
- 12-Volt Dash Receptacle
- Backlit Dash Rocker Switches
- Retractable Lap Desk
- Passenger Console Controls for Map Light and Fan
- Driver and Passenger Map Lights
- One-piece Panoramic Windshield
- Single-motor Intermittent Windshield Wipers
- Automatic LED Headlights
- Side-view Cameras <sup>1</sup>
- Color Back-up Camera
- 7" High Definition LED Multichannel Monitor for Side-view and Back-up Cameras
- Stereo with AM & FM Radio, CD Player, and Satellite Radio <sup>2</sup>
- Ceiling Mounted Speakers
- Overhead Cabinetry with Honeycomb-patterned Glass
- Auxiliary Start Switch
- Concealed Electric Horn
- Manual, Horizontal Opening Driver and Passenger Side Windows
- Powered Solar and Privacy Windshield Shade

DRIVER'S COMPARTMENT OPTIONS	32 FA	32 SA	34 PA	36 LA	36 UA
Passenger Seat Footrest	O	O	O	O	O
In-dash Navigation System	O	O	O	O	O
Front Overhead TV	O	O	O	O	O
Electric Front Overhead Drop-Down Bunk <sup>3</sup> <b>NEW</b>	O	O	O	O	O

<sup>1</sup> Integrated within side-view mirrors and activated by turn signals.

<sup>2</sup> Subscription required for satellite radio.

<sup>3</sup> Mattress measures 72" x 30". Decreases overhead storage capacity. Maximum weight limit of drop-down bunk is 250 pounds. Now includes telescoping ladder.

DINETTE AND LIVING AREA	SLEEPS	SEATS	SEATBELTS	32 FA	32 SA	34 PA	36 LA	36 UA
Driver Side Dinette	72" Booth Dinette-Sleeper <sup>1</sup>	1	4	2	S	S	-	S
	72" Dinette with Chairs <sup>2</sup> <b>UPDATED</b>	-	2	-	O	O	-	O
	72" Dinette Bar <sup>3</sup>	-	2	-	O	-	-	-
	72" Booth Dinette-Sleeper and Recliner <sup>1</sup>	1	5	2	-	-	-	S
	72" Dinette with Chairs and Recliner <sup>2</sup> <b>UPDATED</b>	-	3	-	-	-	-	O
	96" U-Shaped Dinette-Sleeper <sup>4</sup> <b>NEW</b>	1	5	2	-	-	-	O
Driver Side Furniture	89" Flip and Fold Sofa Bed <sup>5</sup>	2	3	3	-	S	-	S
	89" Air Coil Sofa Bed <sup>6</sup>	2	3	3	-	O	-	O
	95" Flip and Fold Sofa Bed <sup>7</sup>	2	3	3	-	-	S	-
	95" Air Coil Sofa Bed <sup>6</sup>	2	3	3	-	-	O	-
	95" Super Sofa <sup>8</sup>	1	3	3	-	-	O	-
	66" Flip and Fold Sofa Bed <sup>7</sup>	1	2	2	-	-	-	S
	66" Air Coil Sofa Bed <sup>9</sup>	1	2	2	-	-	-	O
Driver Side Bunk Beds (28" x 70") <sup>10</sup> <b>UPDATED</b>	2	-	-	S	-	-	-	S
Passenger Side Dinette	72" Dinette Bar with Lift TV <sup>3</sup>	-	2	-	-	-	S	-
	72" Dinette with Chairs <sup>2</sup> <b>UPDATED</b>	-	2	-	-	-	O	-
	72" Booth Dinette-Sleeper <sup>1</sup>	1	4	2	-	-	O	-
Passenger Side Furniture	66" Flip and Fold Sofa Bed <sup>9</sup>	1	2	2	S	-	-	-

<sup>1</sup> Piece of furniture converts to 69" x 45" sleeping area.

<sup>2</sup> Formerly known as "Dinette Computer Workstation". The printer bump-out was removed for more leg room. The keyboard and printer trays have been converted to a drawer and a fixed shelf to maximize storage. Includes (2) freestanding accent chairs and (2) wooden folding chairs.

<sup>3</sup> Includes (2) freestanding accent chairs and (2) wooden folding chairs.

<sup>4</sup> Piece of furniture converts to 46" x 88" sleeping area.

<sup>5</sup> Piece of furniture converts to 74" x 70" sleeping area.

<sup>6</sup> Mattress measures 72" x 59" and requires external pump.

<sup>7</sup> Piece of furniture converts to 80" x 70" sleeping area.

<sup>8</sup> Consists of a flip and fold sofa bed, a 27" single theater seat, and a center console. Flip and fold sofa bed converts to 70" X 51" sleeping area.

<sup>9</sup> Piece of furniture converts to 51" x 70" sleeping area.

<sup>10</sup> Mattress measures 72" x 52" and requires external pump.

<sup>11</sup> Now includes tablet holders in each bunk.

Includes (2) freestanding accent chairs and (2) wooden folding chairs. Lift TV deletes cabinetry over dinette.

## Specifications, Features, and Options (Cont'd)

KEY : S : Standard Feature | O : Optional Feature; Additional costs may apply | D : Dependent; Availability is dependent on selection of another option | — : Not Available

### KITCHEN

- 17-Cubic Foot Smart Convection Microwave with Air Fry
- Double Bowl Kitchen Sink with Single Lever Faucet and Pull-down Sprayer
- Galley Overhead Cabinets
- Panoramic Galley Window
- Task Lighting
- Full Tile Backsplash
- Solid Surface Galley Countertop, Sink, and Cooktop Cover

KITCHEN OPTIONS		32 SA	32 SA	34 PA	36 LA	36 UA
Refrigerator	20-Cubic Foot Stainless Steel Residential Refrigerator with Top Freezer <sup>1</sup>	S	S	—	S	S
	23-Cubic Foot Stainless Steel Residential Refrigerator with French Doors and Bottom Freezer <sup>1</sup>	—	—	S	—	—
Cooking Appliances	Three-Burner Liquid Propane Cooktop	S	S	S	S	S
	Oven Range with Liquid Propane Cooktop	O	O	O	O	O

<sup>1</sup> Refrigerator volume is approximated.

### BEDROOM

- Overhead Cabinets
- Under Bed Storage
- Bedside Windows
- Bed Comforter with Throw Pillows
- Handcrafted Privacy Door
- LED Reading Lights
- Nightstand with Solid Surface Tops
- Mounted Bedroom TV
- Centralized Entertainment Center<sup>1</sup>
- Wardrobe with Drawers Underneath
- Laundry Hamper

BEDROOM OPTIONS		32 FA	32 SA	34 PA	36 LA	36 UA
Mattress	Memory Foam King Mattress (72" x 80")	S	S	O	—	S
	Memory Foam Queen Mattress (60" x 80")	O	O	S	S	O
Bed Slide	Mounted Headboard	S	—	S	S	—
	Window at Head of Bed	—	S	—	—	S
Ceiling Fan		O	O	O	O	O

<sup>1</sup> Houses Blu-ray™ player, satellite receiver, and cable TV hook-up.

### BATHROOM

- (1) Porcelain Master Bathroom Sink
- Solid Surface Lavatory Top
- Handheld Shower Head with Slide Bar
- Shower Skylight
- Shower LED Light with Sliding Cover
- Towel and Toilet Paper Holders
- Mirrored Medicine Cabinet
- Roof Vent Fan
- Base Cabinet

BATHROOM OPTIONS		32 FA	32 SA	34 PA	36 LA	36 UA
Number of Bathrooms	(1) Bathroom	S	S	S	—	—
	(1) Bathroom and (1) Half-bath <sup>1</sup>	—	—	—	S	S
Shower	One-Piece Molded Fiberglass Shower (34.5" x 34.5")	S	—	—	—	—
	One-Piece Molded Fiberglass Shower (28.5" x 40.5")	—	S	S	S	S
Toilet	(1) Gravity Flush Toilet	S	S	S	—	—
	(1) Gravity Flush Toilet and (1) Macerator Toilet	—	—	—	S	S

<sup>1</sup> All half-baths contain a toilet and a solid surface countertop with a single porcelain sink.

## WHAT'S NEW

- Iron Mountain Fabric Suite
- Monteano Floor Tile
- Alpaca and Landscape Upholstery Fabrics
- White Linen and Shadow Cabinetry
- Mounted TV over Dinette for 32 FA
- Booth Dinette-Sleeper Option for 32 FA
- U-Shaped Dinette-Sleeper Option on 36 LA
- Electric Front Overhead Drop-Down Bunk Option
- Tablet Holders in Bunk Beds
- White Ceiling Panels

Because of progressive improvements and specifications, standard and optional equipment are subject to change without notice or obligation. For a complete and up-to-date list of available options and specifications, visit [tiffinmotorhomes.com](http://tiffinmotorhomes.com).

FOR SALES CALL 256-356-8661 AND PARTS & SERVICE CALL 256-356-0261 OR VISIT [TIFFINMOTORHOMES.COM](http://TIFFINMOTORHOMES.COM)

105 2ND ST NW RED BAY, AL 35582  



# TIFFIN

MOTORHOMES

All trademarks and logos are owned or used under license by Tiffin Motor Homes, Inc. and include, but are not limited to: TIFFIN®, MANY ADVENTURES, ONE DREAM™, ALLEGRO®, ALLEGRO BREEZE®, ALLEGRO RED®, PHAETON®, ALLEGRO BUS®, ZEPHYR®, WAYFARER®, ROUGHING IT SMOOTHLY®, OPEN ROAD®, POWERGLIDE®, CAHABA®, BYWAY™, and associated logos and emblems. Unauthorized use of any trademark of Tiffin Motor Homes, Inc. is strictly prohibited.

© Copyright 2023 Tiffin Motor Homes, Inc.

For all information concerning the limited warranty provided by Tiffin, please refer to the full written limited warranty set forth on the Tiffin website or held by our authorized dealerships. Please note, some interior furnishings not included. Revised: 9/5/23